

KVT

Split cable glands



1

Product description

KVT is a circular split frame for quick and easy installation of cables or complete cable harnesses.

Polyamide locknuts are included in the shipment.

For routing SUB-D, DVI or PROFIBUS connectors in combination with the split cable glands KVT, special locknuts with cut-outs are required.

* max. Cable diameter 15 mm

Locknuts

Special locknuts with cut-outs are separate available. The cut-out dimensions are listed on page 148.



KGM-SUB-D9 fits SUB-D9 connectors
(Required wall cut-out: Ø 36 mm, PU: 10)
 Order No. 45105 Order No. 45106

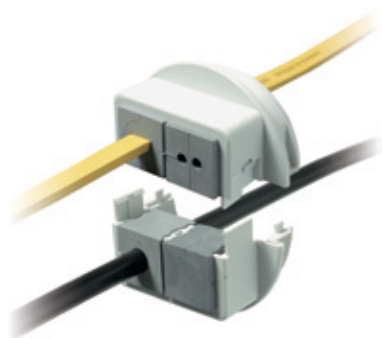
KGM-PB fits DVI and PROFIBUS connectors
(Required wall cut-out: Ø 42 mm, PU: 10)
 Order No. 45107 Order No. 45109

KGM-SUB-D25 fits SUB-D25 connectors
(Required wall cut-out: Ø 50 mm, PU: 10)
 Order No. 45108 Order No. 45110

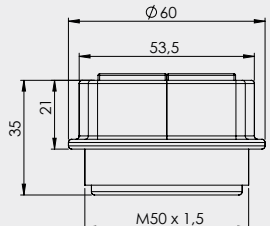
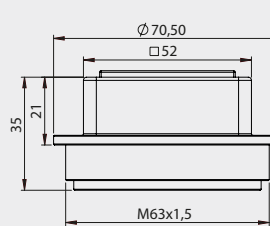
Description	Type	Order No.	Inserts KT small large	Thread Thread length	PU
	KVT 25*	<input type="checkbox"/> 45035 <input type="checkbox"/> 45025	1 -	M25 × 1.5 Length: 14 mm	10
	KVT 32	<input type="checkbox"/> 45036 <input type="checkbox"/> 45026	1 -	M32 × 1.5 Length: 14 mm	10
	KVT 32 + KGM-SUB-D9	<input type="checkbox"/> 45037 <input type="checkbox"/> 45027	1 -	M32 × 1.5 Length: 14 mm	10
	KVT 40	<input type="checkbox"/> 45203 <input type="checkbox"/> 45028	1 -	M40 × 1.5 Length: 14 mm	10
	KVT 40 + KGM-PB	<input type="checkbox"/> 45205 <input type="checkbox"/> 45029	1 -	M40 × 1.5 Length: 14 mm	10

KVT

Split cable glands



Type	Order No.	Inserts KT small large	Thread Thread length	PU	Description
------	-----------	--------------------------	----------------------	----	-------------

KVT 50 2	<input type="checkbox"/> 45204 <input type="checkbox"/> 45030	2 -	M50 × 1.5 Length: 14 mm	5	
KVT 50 2 + KGM-SUB-D25	<input type="checkbox"/> 45206 <input type="checkbox"/> 45031	2 -	M50 × 1.5 Length: 14 mm	5	
KVT 63 1 + GM 63 **	<input type="checkbox"/> 45211 <input type="checkbox"/> 45111	- 1	M63 × 1.5 Length: 14 mm	5	
KVT 63 4 + GM 63 **	<input type="checkbox"/> 45214 <input type="checkbox"/> 45114	4 -	M63 × 1.5 Length: 14 mm	5	

Advantages

- Insertion of pre-terminated cables
- Warranty of pre-terminated cables remains
- Retrofitting and maintenance can be carried out easily and quickly
- High packing density, wide variety
- Suitable for standard or metric cut-outs
- Polyamide locknuts are included in the shipment



Specification

Material	Polycarbonate (PC)
Colour	<input type="checkbox"/> grey (similar RAL 7035) <input type="checkbox"/> black
Flame class	UL94-Vo, self-extinguishing
Protection class	IP54, with gasket and correct selection of the cable inserts
Temperature	- 30°C to + 100°C (static)
Properties	Halogen-free, silicone-free
Cut-out dimension	Metric standard sizes

Accessories

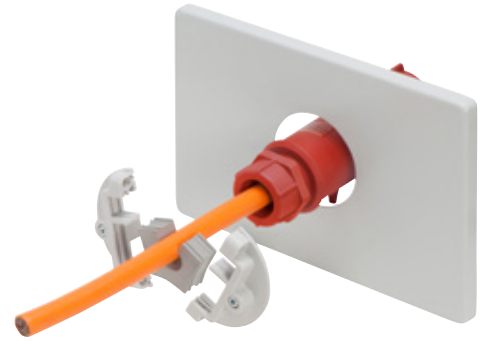
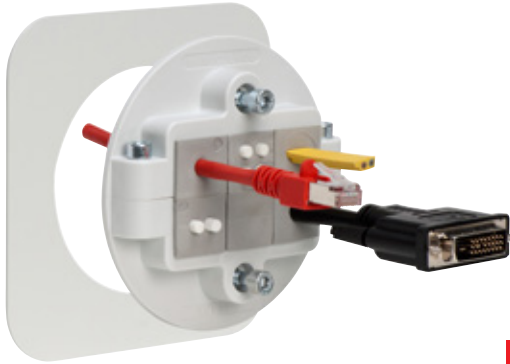
KT Cable inserts	Page 28 - 32
KVT-EMC bracket	Page 113
Locknuts	Page 148

** Locknut GM 63 (brass-nickel plated) is included in delivery.

*** Locknut KGM63 (Polyamide) is included in delivery.

KVT 8o

Split cable glands



1

Product description

The KVT 8o split cable glands are designed for routing and sealing pre-terminated cables.

By connecting the two half-shells with attached screws, the inserts provide sufficient pressure on the routed cables to obtain a high degree of strain relief. The KVT 8o can be fitted to wall thicknesses from 1.5mm to 10mm.

Advantages

- Insertion of pre-terminated cables
- Warranty of pre-terminated cables remains
- Retrofitting and maintenance can be carried out easily and quickly
- High packing density, wide variety
- Quick and easy assembly from the front side
- Strain relief according EN 50262

Note

When mounting the KVT 8o on sheet metal, we recommend the following torque values:

- 1.5 mm sheet = 1 Nm
- From 2.0 mm sheet = 1.5 Nm

Specification

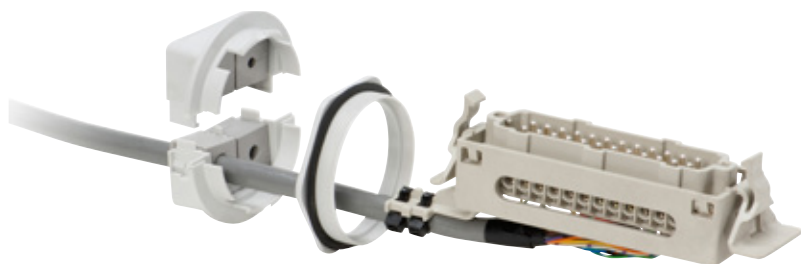
Material	Polycarbonate (PC)
	Screws: Stainless steel
Colour	<input type="checkbox"/> grey (similar RAL 7035) <input checked="" type="checkbox"/> black
Flame class	UL94-Vo, self-extinguishing
Protection class	IP54, with gasket and correct selection of the cable inserts
Temperature Properties	- 30°C to + 100°C (static)
Properties	Halogen-free, silicone-free
Cut-out dimension	80 mm diameter

Accessories

Description	Type	Order No.	Inserts KT small large	PU
	KVT 8o 3	<input type="checkbox"/> 45236 <input checked="" type="checkbox"/> 45239	2 1	1
	KVT 8o 6	<input type="checkbox"/> 45237 <input checked="" type="checkbox"/> 45238	6 -	1

KVT-SNAP

Split cable glands



Type	Order No.	Inserts KT small large	Thread Thread length	PU	Description
------	-----------	--------------------------	----------------------	----	-------------

KVT-SNAP 32	45130	1 -	M32 × 1.5 Length: 11 mm	10	
KVT-SNAP 40	45134	1 -	M40 × 1.5 Length: 11 mm	10	
KVT-SNAP 63 4*	45152	4 -	M63 × 1.5 Length: 11 mm	5	
KVT-SNAP 63 1*	45154	- 1	M63 × 1.5 Length: 11 mm	5	
KGM 32	□ 52275 ■ 52285	PA	M32 × 1.5	10	
KGM 40	□ 52276 ■ 52286	PA	M40 × 1.5	10	
KGM 63	□ 52278 ■ 52288	PA	M63 × 1.5	5	

Product description

KVT is a circular split frame for quick and easy installation of cables or complete cable harnesses.

Pre terminated cables can be routed through thick walls (> 5 mm) e.g. into cast junction boxes by using the model KVT-SNAP, without the use of tools.

* For KVT 63 a locknut M63 (brass-nickel plated) is included in delivery.

Assembly

- SNAP ring is screwed into metric thread tapped into housing (or it can be fastened with a locknut)
- Once the SNAP ring is affixed to the housing the KVT equipped with cables is simply pushed into the SNAP ring. Quick and easy installation!

Specification

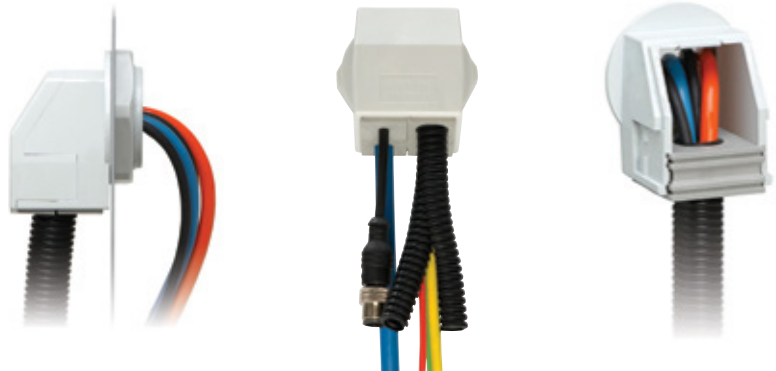
Material	Polycarbonate (PC)
Colour	grey (similar RAL 7035)
Flame class	UL94-Vo, self-extinguishing
Protection class	IP54, with gasket and correct selection of the cable inserts
Temperature	- 30°C to + 100°C (static)
Properties	Halogen-free, silicone-free
Cut-out dimension	Metric standard cut-outs

Accessories

KT Cable inserts	Page 28 - 32
KVT-EMC bracket	Page 113
Locknuts	Page 148

KVT-W90

Split cable glands



1

Product description

The split KVT-W90 cable glands are used to insert and seal pre-terminated cables and conduits at a 90° angle.

In particular, the KVT 50-W90 is perfectly suited to hold corrugated or smooth hoses. A large number of cable entry inserts is available to the user.

Polyamide locknuts are included in the shipment.

Advantages

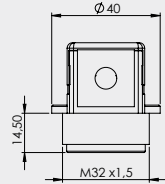
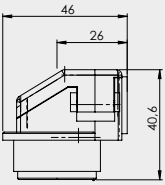
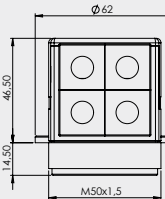
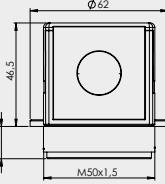
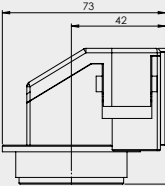
- Installation at an angle of 90° to the cabinet
- Insertion of pre-terminated cables and conduits
- Warranty of pre-terminated cables remains
- Suitable for standard or metric cut-outs

Specification

Material	Polycarbonate (PC)
Colour	■ grey (similar RAL 7035)
Flame class	■ black
Protection class	UL94-V0, self-extinguishing IP54, with gasket and correct selection of the cable inserts
Temperature Properties	- 30°C to + 100°C (static)
Cut-out dimension	Halogen-free, silicone-free Metric standard cut-outs

Accessories

KT Cable inserts	Page 28 - 32
KVT-EMC bracket	Page 113
WST Conduit, split	Page 138
Locknuts	Page 148

Description	Type	Order No. with locknut	Inserts KT small large	Thread Thread length	PU
	KVT 32-W90	<input type="checkbox"/> 45404 <input checked="" type="checkbox"/> 45406	1 -	M32 x 1.5 Length: 11.5 mm	10
	GMT 32	<input checked="" type="checkbox"/> 31120	-	M32 x 1.5	10
	KVT 50 4-W90	<input type="checkbox"/> 45424 <input checked="" type="checkbox"/> 45426	4 -	M50 x 1.5 Length: 11.5 mm	5
	KVT 50 1-W90	<input type="checkbox"/> 45414 <input checked="" type="checkbox"/> 45416	- 1	M50 x 1.5 Length: 11.5 mm	5
	GMT 50	<input checked="" type="checkbox"/> 31140	-	M50 x 1.5	10