

DRILLS, HOLE SAWS, DIAMOND TOOLS

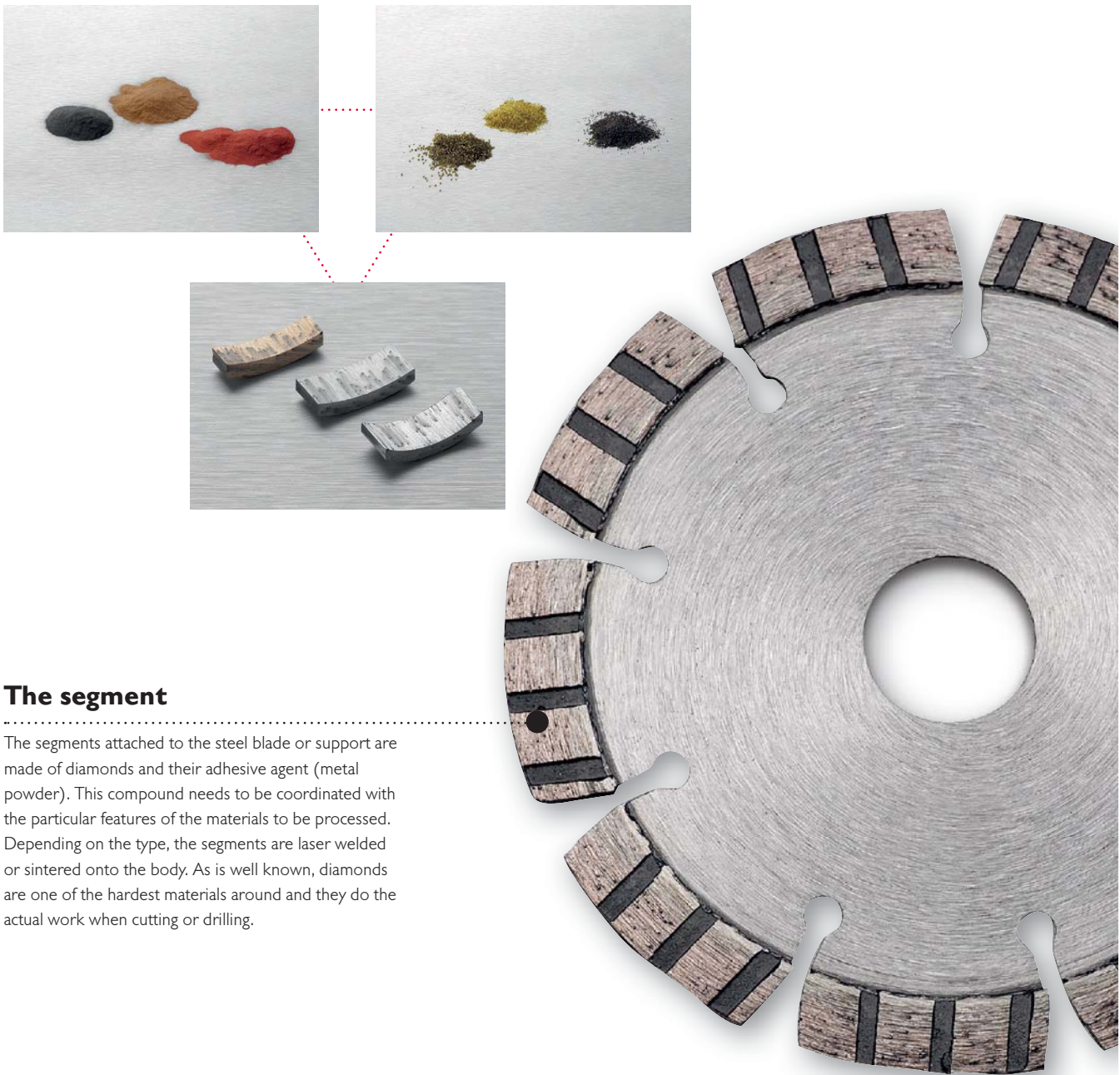
Materials used today are required to be highly energy efficient.

They not only need to provide a high level of thermal insulation, be breathable and flame-resistant, but must also be resistant to mould and provide excellent sound insulation.

This increases the demands made of the tools to be used.

And that is precisely where we come into play! We have compiled a product range of diamond tools which meets both the requirements of modern materials (e.g. concrete, quality C 20/25, C 25/30) and also those of the used in older buildings (e.g. natural stone).

The diamond segments in our cutting disks and core bits are just one of the advantages you will find in these professional tools which allow the user to attain first class results when carrying out the work required.



The segment

The segments attached to the steel blade or support are made of diamonds and their adhesive agent (metal powder). This compound needs to be coordinated with the particular features of the materials to be processed. Depending on the type, the segments are laser welded or sintered onto the body. As is well known, diamonds are one of the hardest materials around and they do the actual work when cutting or drilling.

- 1
- 2
- 3
- 4
- 5
- 6
- 7
- 8
- 9
- 10
- 11
- 12
- 13
- 14
- 15
- 16
- 17
- 18
- 19
- 20
- 21
- 22
- 23
- 24
- 25
- 26

Pneumatic rotary drill hammer 550 W

The lightest rotary hammer drill with the best weight/performance ratio in the world, an ergonomic shape allowing you to work without tiring, with brush switchover of maximum torque turning to the left and right, sophisticated hammer drill technology for the diameter range 6-12 mm (raw plug holes), robust magnesium pressure-cast transmission casing, network cable module 4 m long

Included in delivery:

550 W pneumatic rotary drill hammer and 2-component soft handle complete with drilling depth stop.

Supplied in a professional plastic case.

Power consumption	550 Watt
Idling speed	0...1450 rpm
Hammer energy	1.8 Joule
Tool holder	SDS Plus
Recommended drilling range	
Hammer drilling	up to a \varnothing of 4-12 mm
Hammer drilling in concrete	up to a \varnothing of 18 mm
Drilling in steel	up to a \varnothing of 13 mm
Drilling in wood	up to a \varnothing of 25 mm
Machine weight	1700 g

1 11 0002



850 W 2-speed hammer drill

Ergonomic shape full-wave electronics with speed selection, brush switchover allowing maximum torque turning to the left and right, mechanical 2-gear transmission, made of robust pressure-cast aluminium, metal quick-action chuck \varnothing 13 mm, network cable module 4 m long.

Included in delivery:

850 W 2-speed hammer drill and 2-component soft handle complete with drilling depth stop.

Supplied in a professional plastic case.

Power consumption	850 Watt
1st gear idling speed	0 ... 1250 rpm
2nd gear idling speed	0 ... 3000 rpm
Drilling capacity in \varnothing :	wood 40 mm, steel 13 mm, hammer drilling: concrete 20 mm
Machine weight	2300 g

1 11 0004



14.4 V 2-speed cordless screwdriver

Powerful cordless screwdriver with rapid-action chuck changing system, 2-gear planetary transmission in 1st gear for screw action and 2nd gear for drilling, robust aluminium pressure-cast transmission housing, charging time only 15 min., lithium-ion battery technology.

Included in delivery: 14.4 Volt 2-speed cordless screwdriver, \varnothing 13 mm quick-clamping chuck, second battery pack.

Supplied in a professional plastic case. Battery 14.4 Volt / 1.5 Ah Li-Ion

1st gear idling speed	0...360 rpm
2nd gear idling speed	0...1500 rpm
Chuck span	1.5 - 13 mm
Drilling in wood	up to a \varnothing of 38 mm
Drilling in steel	up to a \varnothing of 13 mm
Screwing in wood	up to a \varnothing of 10 mm
Max. torque (hard)	55 Nm
Machine weight incl. chuck	1600 g

1 11 0006



Twist drill

according to DIN 338/HSS Type N, short cylindrical, right-hand cutting, roll-forged design

ø mm	Total length	Spiral length		
1.0	34	12	10	20 0314
1.5	40	18	10	20 0324
2.0	49	24	10	20 0334
2.4	57	30	10	20 0342
2.5	57	30	10	20 0344
2.8	61	33	10	20 0350
3.0	61	33	10	20 0354
3.1	65	36	10	20 0356
3.2	65	36	10	20 0358
3.3	65	36	10	20 0360
3.5	70	39	10	20 0364
4.0	75	43	10	20 0373
4.1	75	43	10	20 0374
4.2	75	43	10	20 0375
4.5	80	47	10	20 0379
4.8	86	52	10	20 0383
5.0	86	52	10	20 0385
5.1	86	52	10	20 0386
5.2	86	52	10	20 0387
5.5	93	57	10	20 0391
6.0	93	57	10	20 0397
6.5	101	63	10	20 0403
6.8	109	69	10	20 0407
7.0	109	69	10	20 0409
7.5	109	69	10	20 0415
8.0	117	75	10	20 0421
8.5	117	75	10	20 0427
9.0	125	81	10	20 0433
9.5	125	81	10	20 0439
10.0	133	87	10	20 0445
10.2	133	87	10	20 0447
10.5	133	87	10	20 0451
11.0	142	94	10	20 0457
11.5	142	94	10	20 0463
12.0	151	101	5	20 0469
12.5	151	101	5	20 0472
13.0	151	101	5	20 0476

Further dimensions, in particular intermediate sizes available ex stock.

Twist drill sets

according to DIN 338, in highly-stable plastic cartridge with clamping bar for each drill

Unit	ø mm	increasing by			
			mm		
Roll-milled drill, HSS					
19	1 - 10	0.5		1	20 1352
25	1 - 13	0.5		1	20 1354
Profile-ground drill, HSS, uncoated design					
19	1 - 10	0.5		1	20 1358
25	1 - 13	0.5		1	20 1360

Twist drill set

in round plastic box, roll-milled drill, HSS, according to DIN 338

Unit	ø mm	increasing by			
			mm		
19	1 - 10	0.5		1	20 1320

Twist drill workshop magazine

in metal cartridge, roll-milled drill, HSS, according to DIN 338, 170 pieces, increasing by 0.5 mm

10 units each of sizes 1.0 - 8.0 mm and 5 units each of sizes 8.5 - 10.0 mm	1	20 1340
---	---	---------



Stone and concrete drill

with hard metal blades and cylindrical shaft, ideal for use in cordless combi drills, optimised for constantly recurring applications in masonry

ø mm	Total length	Spiral length	PU	Article no.
4	85	45	10	20 1604
5	90	50	10	20 1610
6	100	60	10	20 1614
	150	110	10	20 1702
	400	275	10	20 1752
7	100	60	10	20 1618
8	120	80	10	20 1622
	400	275	10	20 1758
	600	350	5	20 1854
10	150	110	10	20 1630
	400	275	10	20 1760
12	150	90	10	20 1634
	400	275	10	20 1762
14	150	90	10	20 1638
	600	500	10	20 1862



Stone and concrete drill set, 7 pieces

for hammer drills and cordless screwdrivers. With round shaft and four-spiral conveying helix for a rapid transportation of the drilling dust. Hard metal tips, premium soldering. In a practical plastic box.

Drill ø x length mm

4 x 80 / 5 x 95 / 5 x 150 / 6 x 100 / 8 x 120 / 10 x 120 / 12 x 150 mm	1	20 1380
--	---	---------

PROFI SDS-Plus hammer drill

with hard metal blades, high drilling speed thanks to the wide Twinmax helix, the user is protected by the vibration-optimised drilling behaviour, certified by the German Masonry Drill Bit Testing Association (PGM) in accordance with the requirements as set out by the German Institute for Building Technology (DIBt), suitable for all machines with SDS plus holders, Made in Germany

ø mm	Total length	Spiral length	PU	Article no.
5	110	50	1	20 8302
	160	100	1	20 8304
6	110	50	1	20 8308
	160	100	1	20 8310
7	110	50	1	20 8316
	160	100	1	20 8318
8	110	50	1	20 8320
	160	100	1	20 8322
10	210	150	1	20 8324
	110	50	1	20 8328
12	160	100	1	20 8330
	210	150	1	20 8332
	310	250	1	20 8334
14	460	400	1	20 8336
	260	200	1	20 8341
	160	100	1	20 8342
16	210	150	1	20 8343
	310	250	1	20 8344
	450	400	1	20 8346
18	600	550	1	20 8348
	160	100	1	20 8354
	200	150	1	20 8355
20	300	250	1	20 8356
	450	400	1	20 8357
	250	200	1	20 8360
22	160	100	1	20 8362
	200	150	1	20 8364
	300	250	1	20 8365
24	450	400	1	20 8366
	600	550	1	20 8368
	200	150	1	20 8372
26	450	400	1	20 8373
	450	400	1	20 8378
	200	150	1	20 8380
28	450	400	1	20 8382
	250	200	1	20 8384
	450	400	1	20 8386
30	250	200	1	20 8388
	300	250	1	20 8390

Further sizes on request.



SDS-Plus hammer drill set, 7 pieces

equipped with drills from our 20 8300 ff. range, supplied in a stable plastic cartridge.

Drill \varnothing x length mm

5 x 110 / 6 x 110 / 6 x 160 / 8 x 110 / 8 x 160 / 10 x 160 / 12 x 160 1 20 1395

SDS-Plus hammer drill CIMCO

with hard metal blades, for all concrete and stone applications (concrete, aerated concrete/YTONG, sand-lime brick masonry, stone), certified by the German Masonry Drill Bit Testing Association (PGM) in accordance with the requirements as set out by the German Institute for Building Technology (DIBt), suitable for all machines with SDS plus holders

\varnothing mm	Total length	Spiral length		
5	110	50	1	20 8602
	160	100	1	20 8604
5.5	110	50	1	20 8605
	160	100	1	20 8606
6	110	50	1	20 8608
	160	100	1	20 8610
6.5	110	50	1	20 8616
	160	100	1	20 8618
8	110	50	1	20 8620
	160	100	1	20 8622
	210	150	1	20 8624
	10	110	50	1
	160	100	1	20 8630
	210	150	1	20 8632
	310	250	1	20 8634
	450	400	1	20 8636
12	160	100	1	20 8642
	210	150	1	20 8643
	310	250	1	20 8644
	450	400	1	20 8646
	600	550	1	20 8648
	14	160	100	1
	210	150	1	20 8655
	310	250	1	20 8656
	450	400	1	20 8657
	16	160	100	1
	210	150	1	20 8664
	450	400	1	20 8666
	600	550	1	20 8668
	18	210	150	1
	450	400	1	20 8673
	20	210	150	1
	450	400	1	20 8682
	22	310	250	1
	450	400	1	20 8686
	25	310	250	1

Further sizes on request.



TripleX SDS-Plus hammer drill

Three-winged hard metal blades with a wave-like head design and laterally reinforced blade shape make the TripleX permanently strong in the hardest concrete. Also suitable for stone, aerated concrete, sand-lime brick masonry. An innovative, the TripleX owes its extreme service life and powerful drilling behaviour to its very wide hard metal design of the drilling head. The embedded hard metal head complete with curved shape is created using a novel production process, enabling it to withstand the highest of forces. Thanks to its three wide spirals in combination with the three hard metal blades, ideal drilling dust removal is ensured without the drilling dust being blown out. Also remains steady in the event of reinforcement being struck.

The TripleX is certified by the German Masonry Drill Bit Testing Association (PGM) in accordance with the requirements as set out by the German Institute for Building Technology (DIBt).

ø mm	Total length	Spiral length		
5	110	50	1	20 8400
5	160	100	1	20 8402
5.5	110	50	1	20 8404
5.5	160	100	1	20 8406
6	110	50	1	20 8408
6	160	100	1	20 8410
6	210	150	1	20 8412
6	260	200	1	20 8414
6.5	110	50	1	20 8416
6.5	160	100	1	20 8418
6.5	210	150	1	20 8420
7	160	100	1	20 8422
7	210	150	1	20 8424
8	110	50	1	20 8426
8	160	100	1	20 8428
8	210	150	1	20 8430
8	260	200	1	20 8432
8	310	250	1	20 8434
8	450	400	1	20 8436
10	110	50	1	20 8438
10	160	100	1	20 8440
10	210	150	1	20 8442
10	260	200	1	20 8444
10	310	250	1	20 8446
10	450	400	1	20 8448
10	600	550	1	20 8450
12	160	100	1	20 8452
12	210	150	1	20 8454
12	260	200	1	20 8456
12	310	250	1	20 8458
12	450	400	1	20 8460
12	600	550	1	20 8462
14	160	110	1	20 8464
14	200	150	1	20 8466
14	250	200	1	20 8468
14	300	250	1	20 8470
14	450	400	1	20 8472
14	600	550	1	20 8474
16	200	150	1	20 8476
16	260	200	1	20 8478
16	300	250	1	20 8480
16	450	400	1	20 8482
16	600	550	1	20 8484



SDS-MAX hammer drill

with hard metal blades, 12 - 15 mm \varnothing = 2 blades, from 16 mm in \varnothing = 4 blades, with SDS-MAX holder system, suitable for all machines with SDS-MAX holders.

\varnothing mm	Total length	Spiral length		
12	340	200	1	20 8100
	540	400	1	20 8102
	740	600	1	20 8104
14	340	200	1	20 8106
	540	400	1	20 8108
15	340	200	1	20 8110
	540	400	1	20 8112
16	340	200	1	20 8114
	540	400	1	20 8116
18	340	200	1	20 8118
	540	400	1	20 8120
20	320	200	1	20 8122
	520	400	1	20 8124
	920	800	1	20 8126
22	320	200	1	20 8128
	520	400	1	20 8130
	920	800	1	20 8132
24	320	200	1	20 8134
	520	400	1	20 8136
25	320	200	1	20 8138
	520	400	1	20 8140
	920	800	1	20 8142
28	320	200	1	20 8144
	520	400	1	20 8146
30	320	200	1	20 8150
	520	400	1	20 8152
32	320	200	1	20 8154
	520	400	1	20 8156
	920	800	1	20 8158
35	320	200	1	20 8160
	520	400	1	20 8162
	720	600	1	20 8164
38	320	200	1	20 8166
	520	400	1	20 8168
40	320	200	1	20 8170
	520	400	1	20 8172
	920	800	1	20 8174



Multi-purpose drills

with hard metal blades and cylindrical shaft. The ideal universal drill for a variety of materials used during construction. A slight hammer action may be used when drilling in masonry and stone.

\varnothing mm	Total length	Spiral length		
4	85	45	1	20 1880
5	95	50	1	20 1882
6	100	60	1	20 1884
7	150	110	1	20 1886
8	120	80	1	20 1888
10	120	80	1	20 1890
12	150	90	1	20 1892

SDS-Plus chisel**Pointed chisel**

for the laying of lines, for all types of chiselling / demolition works as well as breakthrough works.

11 mm, round	250	1	20 8002
14 mm, square	250	1	20 8004

Flat chisel

for selective breaking actions, all types of chiselling / demolition works and breakthrough works.

20 mm	250	1	20 8010
-------	-----	---	---------

Spade chisel

for the large-scale universal removal of material.

40 mm	250	1	20 8006
-------	-----	---	---------

Gouge

for cutting narrow channels into concrete and masonry.

22 mm	250	1	20 8020
-------	-----	---	---------

Tile chisel

for the removal of tiles.

40 mm	250	1	20 8012
75 mm	165	1	20 8000

Winged chisel

for the stemming, cutting and pulling of channels with a depth restriction.

22 mm	250	1	20 8008
-------	-----	---	---------

Groove chisel

for removing and cleaning grooves and masonry.

25 mm	250	1	20 8014
-------	-----	---	---------

HM groove chisel

for removing and cleaning grooves and masonry with an extra-long service life.

32 mm	125	1	20 8016
32 mm	200	1	20 8018

SDS-Max chisel**Pointed chisel**

for the laying of lines, for all types of chiselling / demolition works as well as breakthrough works.

	280	1	20 8030
	400	1	20 8032
	600	1	20 8034

Flat chisel

for selective breaking actions, all types of chiselling / demolition works and breakthrough works.

25 mm	280	1	20 8036
25 mm	400	1	20 8038
25 mm	600	1	20 8040

Spade chisel

for the large-scale universal removal of material.

50 mm	400	1	20 8042
80 mm	300	1	20 8044
115 mm	350	1	20 8060

Channel chisel

for the pulling, stemming and cutting of channels.

32 mm	300	1	20 8046
-------	-----	---	---------

Gouge

for cutting narrow channels into concrete and masonry.

26 mm	300	1	20 8050
-------	-----	---	---------



Toothed chisel

for restoring grooves and masonry.

32 mm	300	1	20 8052
-------	-----	---	---------

Mortar chisel

for removing and cleaning joints in masonry and mortar.

10 mm	300	1	20 8054
-------	-----	---	---------

Tile chisel

for the removal of tiles.

50 mm	300	1	20 8056
-------	-----	---	---------

Winged chisel

for the stemming, cutting and pulling of channels with a depth restriction.

35 mm	380	1	20 8058
-------	-----	---	---------

Impact core bits

The 6 accurately ground blades soldered with silver achieve excellent durability, even when dealing with hard materials. The hardened steel body with M 16 female thread and the optimised concentricity is ideally suited for concrete, stone, masonry, clinker brick, tiles and lightweight construction materials.

Holder shaft in hexagonal or SDS-plus version. Low-wear hard metal teeth with slot soldering ensure maximum stability. With interchangeable centring drill bits for light impacting use (material dependent), precise incorporation of switch / distribution boxes.

	Drilling ø mm		
Impact core bits in hexagonal version	68	1	20 7311
	80 (82)	1	20 7315
Impact core bits with SDS-Plus	68	1	20 7321
	80 (82)	1	20 7325
Centring drill bit	9 (8)	1	20 7340
Hexagonal holder shaft	SW 12 100	1	20 7330
SDS-Plus holder shaft	110	1	20 7334

HSS step drill

especially for screwed cable glands in electrical assembly, perfectly round and cylindrical holes in various diameters, centring, drilling, drilling out and deburring in a single work stage, suitable for use in hand and box column drills in the fields of trade and industry, for sheet metal and plate metal, profiles and tubes manufactured from steel, brass, copper, aluminium, V2A stainless steel, plastic, wood, etc. up to 3 mm in thickness. Holder shaft 12 mm ø.

Surfaces additionally coated with TiN (titanium nitrite) after hardening are extremely hard and smooth. Higher cutting speed permits quicker working, lower wear increases the durability by between 5 and 10 fold!

Drilling ø mm

40.5 through-hole for
38.5 core hole for
37.0 through-hole for
32.5 through-hole for
30.5 core hole for
28.3 through-hole for
25.5 through-hole for
23.5 core hole for
22.5 through-hole for
20.5 through-hole for
20.4 through-hole for
18.6 through-hole for
18.5 core hole for
16.5 through-hole for
15.2 through-hole for
14.5 core hole for
12.5 through-hole for
8.0 centring drill bit

	M 40	M 40	Pg 2933.6	M 32	M 32	Pg 2125.8	M 25	Pg 16	M 20	Pg 13.5	Pg 11	M 16	Pg 9	M 16	Pg 7/M 12	Drill steps		
HSS	•	•	•	•	•	•	•	•	•	•	•	•	•	•	•	9	1	20 1201
HSS-TIN	•	•	•	•	•	•	•	•	•	•	•	•	•	•	•	9	1	20 1206
HSS	•	•	•	•	•	•	•	•	•	•	•	•	•	•	•	11	1	20 1200
HSS-TIN	•	•	•	•	•	•	•	•	•	•	•	•	•	•	•	11	1	20 1205
HSS	•	•	•	•	•	•	•	•	•	•	•	•	•	•	•	10	1	20 1207
HSS-TIN	•	•	•	•	•	•	•	•	•	•	•	•	•	•	•	10	1	20 1208
HSS	•	•	•	•	•	•	•	•	•	•	•	•	•	•	•	12	1	20 1209
HSS-TIN	•	•	•	•	•	•	•	•	•	•	•	•	•	•	•	12	1	20 1210

Replacement centring drill

suitable for all CIMCO step drills

Shaft ø 6 mm	8 mm ø	1	20 1273
Shaft ø 4 mm (new generation)	8 mm ø	1	20 1274



- 1
- 2
- 3
- 4
- 5
- 6
- 7
- 8
- 9
- 10
- 11
- 12
- 13
- 14
- 15
- 16
- 17
- 18
- 19
- 20
- 21
- 22
- 23
- 24
- 25
- 26

HSS step drill for screwed cable glands

Special design for centric core holes and through-holes for metric screwed cable glands with 2 flutes, holder shaft \varnothing 12 mm

Drilling range

M 12 - 32	1	20 1275
-----------	---	---------

Special step drill for screw punching

HSS step drill for burr-free drilling of through-holes for screw puncher tension bolts M 8 ($\frac{3}{8}$ ") – M 10 ($\frac{7}{16}$ ") – M 12 – M 16 – $\frac{3}{4}$ " – M 20 in material up to 4 mm thick. Suitable for use in hand and box column drills, total of 9 drill steps, holder shaft (\varnothing 10 mm) with \varnothing 3 driver carriers prevents slipping in the chuck.

	1	20 1212
--	---	---------

Step drill holder shaft 10 mm \varnothing	M12, M16, M20, M25, M32, M40	1	13 4032
---	------------------------------	---	---------

Step drill

for mechanical engineering and sheet metal processing, manufactured from HSS, complete with 2 blades, increasing by 1 mm

Drilling range Max. drilling Holder
 \varnothing mm depth mm shaft \varnothing mm

4 - 12	5	6	1	20 1214
12 - 20	4	9	1	20 1216
20 - 30	4	12	1	20 1218

Drilling paste

50 g	1	20 1307
------	---	---------

Sheet taper drill

for burr-free processing of thin materials up to 2 mm, manufactured from HSS

Drilling range

\varnothing mm	Shaft \varnothing mm	Size	Length mm		
3 - 9.1	6		60	1	20 1294
3 - 11.2	6		60	1	20 1295
3 - 14.0	6	0	60	1	20 1280
8 - 20.0	8	1	62	1	20 1282
16 - 30.0	10	2	72	1	20 1284
25 - 40.0	12	3	83	1	20 1286

Sheet taper drill set

in sheet steel cassette, with drilling paste

1 each of the following CIMCO article no. 20 1280, 20 1282, 20 1284	1	20 1300
---	---	---------

Aerial drill

manufactured from HSS

Drilling range

\varnothing mm	Shaft \varnothing mm	Size	Length mm		
9.5 - 22.5	8	1	80	1	20 1290
4.0 - 30.5	10	2	100	1	20 1293

Milling drill

manufactured from premium-quality HSS for excellent performance and high durability, ground milling teeth and deep-ground flutes for drilling, milling, cutting, rasping and filing wood, chipboard, plastics, aluminium, other nonferrous metals, steel sheets, plasterboard.

\varnothing mm Length mm

6.35 ($\frac{1}{4}$ ")	94	1	20 1298
--------------------------	----	---	---------

90° countersink bit

manufactured from HSS, 3 blades, with axial and radial back taper, $\frac{1}{4}$ " shaft, according to DIN 3126

\varnothing mm for M Length mm

6.3	3	31	1	20 1982
8.3	4	31	1	20 1983
10.4	5	34	1	20 1984
12.4	6	35	1	20 1985
16.5	8	38	1	20 1986
20.5	10	42	1	20 1987



90° countersink bit set

6 pieces, in sheet steel cassette

1 unit each of countersink bit 6.3 - 20.5 mm ø 1 20 1989

Combi thread taps

drilling - thread cutting - deburring in a single work stage, manufactured from HSS, suitable for steel and non-ferrous metals, for material thicknesses up to 1 x diameter

M 3	1	20 7372
M 4	1	20 7373
M 5	1	20 7374
M 6	1	20 7375
M 8	1	20 7376
M 10	1	20 7377

Combi thread tap set

for core hole drilling, thread cutting and deburring in a single work stage, with 1/4" hexagonal shaft. This product is used in the processing of steel non-ferrous metals and plastics. Particularly useful for assembly work and small batches, supplied in a practical plastic box.

1 unit each of M 3 - 4 - 5 - 6 - 8 - 10 1 20 7360

HSS thread tap bits

in metal cartridge, with thread taps according to DIN 352 for metric standard threads, 3 piece bits with roughing tap, middle tap and finish tap, 1 bit each in sizes M 3 - 4 - 5 - 6 - 8 - 10 - 12

1 20 3920

additionally with HSS twist drills (core hole drills)

2.5 - 3.3 - 4.2 - 5 - 6.8 - 8.5 - 10.2 mm ø 1 20 3924

Hand thread tap DIN 352/HSS

for metric ISO thread according to DIN 13 (6 H tolerance), 3 piece bits: roughing tap - middle tap - finish tap

Thread	Increased mm	Shaft ø mm	Total length mm		
M 1	0.25	2.5	32	1	20 2100
M 2	0.40	2.8	40	1	20 2110
M 2.2	0.45	2.8	40	1	20 2112
M 2.5	0.45	2.8	40	1	20 2114
M 3	0.45	2.8	40	1	20 2116
M 3.5	0.60	4.0	45	1	20 2118
M 4	0.70	4.5	45	1	20 2120
M 5	0.80	6.0	50	1	20 2123
M 6	1.00	6.0	50	1	20 2124
M 7	1.00	6.0	40	1	20 2125
M 8	1.25	6.0	56	1	20 2126
M 9	1.25	7.0	63	1	20 2127
M 10	1.50	7.0	70	1	20 2128
M 11	1.50	8.0	70	1	20 2129
M 12	1.75	9.0	75	1	20 2130

HSS thread tap DIRECT CUTTER

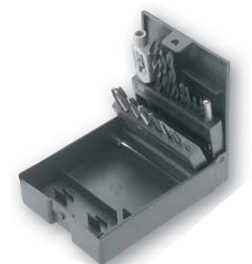
DIN 352/B cutting thread tap with spiral point, for metric standard thread, supplied in a plastic cartridge

1 unit each of thread tap size M 3 - 4 - 5 - 6 - 8 - 10 - 12

1 unit each of HSS twist drill (core hole drill) in sizes 2.5 - 3.3 - 4.2 - 5.0 - 6.8 - 8.5 - 10.2 mm

1 tap wrench, size 1 1/2 (for M 1 - M 12 thread tap)

1 20 3070



HSS thread tap DIRECT CUTTER

with exposed teeth, dimensions according to DIN 352, for metric ISO thread according to DIN 13

Thread	Increased mm	Shaft ø mm	Total length mm		
M 3	0.50	3.5	40	1	20 3050
M 4	0.70	4.5	45	1	20 3051
M 5	0.80	6.0	50	1	20 3052
M 6	1.00	6.0	50	1	20 3053
M 8	1.25	7.0	56	1	20 3054
M 10	1.50	7.0	70	1	20 3055
M 12	1.75	9.0	75	1	20 3060

Tool holder

with ratchet for clockwise and anti-clockwise rotation, chrome plated

Clamping range for thread taps

mm	DIN	ISO			
2.6 - 5.5	M 3 - 10	M 3 - 6	85	1	20 7170
4.6 - 8	M 5 - 12	M 6 - 12	110	1	20 7172

Adjustable tap wrenches DIN 1814

for thread taps according to DIN 352

Size	□ mm	For thread tap metr. M	Wwth. $\frac{1}{16}$ - $\frac{1}{4}$	Wwth. $\frac{3}{16}$ - $\frac{1}{2}$	Wwth. $\frac{3}{8}$ - $\frac{1}{4}$		
0	2.1 - 4.9	1 - 8	$\frac{1}{16}$ - $\frac{1}{4}$	-	-	1	20 7150
1	2.1 - 5.5	1 - 10	$\frac{1}{16}$ - $\frac{3}{8}$	-	-	1	20 7151
1 1/2	2.1 - 7	1 - 12	$\frac{1}{16}$ - $\frac{1}{2}$	-	-	1	20 7152
2	3.8 - 7	4 - 12	$\frac{3}{16}$ - $\frac{1}{2}$	$\frac{3}{8}$ - $\frac{1}{4}$	-	1	20 7153
3	4.9 - 12	5 - 21	$\frac{1}{4}$ - $\frac{3}{4}$	$\frac{1}{8}$ - $\frac{3}{8}$	-	1	20 7154
4	5.5 - 16	9 - 27	$\frac{3}{8}$ - 1	$\frac{1}{8}$ - $\frac{3}{4}$	-	1	20 7155

HSS thread cutting tool bit

for metric standard threads.

Supplied in metal cartridge, with thread taps according to DIN 352, 3 pieces in sizes M 3 - 4 - 5 - 6 - 8 - 10 - 12,

Threading die according to DIN 223 M 3 - 4 - 5 - 6 - 8 - 10 - 12, thread gauge,

Threading die holder mm 20 x 5 - 20 x 7 - 25 x 9 - 30 x 11 - 38 x 14

Tap wrench size 1 - size 2

1 20 3930

Nipple threading die

with guidance, threading die and interchangeable thread tap

M 10 + M 13	1	14 1000
M 10 x 1 mm	1	14 1002
M 13 x 1 mm	1	14 1004

Threading die DIN 223

pre-slit, for metric ISO threads according to DIN 13 (6 G tolerance)

Thread	Increased mm	External ø mm	Height mm		
M 2	0.40	16	5	1	20 3610
M 2.2	0.45	16	5	1	20 3612
M 2.5	0.45	16	5	1	20 3614
M 3	0.50	20	5	1	20 3616
M 3.5	0.60	20	5	1	20 3618
M 4	0.70	20	5	1	20 3620
M 5	0.80	20	7	1	20 3623
M 6	1.00	20	7	1	20 3624
M 7	1.00	25	9	1	20 3625
M 8	1.25	25	9	1	20 3626
M 9	1.25	25	9	1	20 3627
M 10	1.50	30	11	1	20 3628
M 11	1.50	30	11	1	20 3629
M 12	1.75	38	14	1	20 3630



Threading die holder DIN 225

for DIN 223 threaded dies

Size	For thread		Length mm		
	metr. M	Wwth.			
0	1-2-6	1/16 - 3/32	16 x 5	1	20 7200
1	3 - 4	1/8 - 5/32	20 x 5	1	20 7201
2	4.5 - 6	3/16 - 1/4	20 x 7	1	20 7202
3	7 - 9	5/16	25 x 9	1	20 7203
4	10 - 11	3/8 - 7/16	30 x 11	1	20 7204
5	12 - 14	1/2 - 9/16	38 x 14	1	20 7206



further thread taps, threading dies and tool holders available upon request.

Thread cutting tools for screwed cable glands

Thread tap

for metric screwed cable glands, also in plastic, not in VA stainless steel

	Total length	Thread length		
M 12 x 1.5	70	24	1	14 0850
M 16 x 1.5	74	26	1	14 0852
M 20 x 1.5	80	28	1	14 0854
M 25 x 1.5	93	33	1	14 0856
M 32 x 1.5	105	38	1	14 0858
M 40 x 1.5	105	38	1	14 0860
M 50 x 1.5	120	40	1	14 0862
M 63 x 1.5	120	40	1	14 0864



for tube PG (steel conduit thread) according to DIN 40430 PG

PG 7	70	24	1	14 0970
PG 9	74	26	1	14 0972
PG 11	76	26	1	14 0974
PG 13.5	80	28	1	14 0976
PG 16	85	30	1	14 0978
PG 21	93	33	1	14 0980
PG 29	105	38	1	14 0982
PG 36	110	40	1	14 0984
PG 42	120	40	1	14 0986
PG 48	120	40	1	14 0988

Adjustable tap wrenches

for thread taps

M	Inch	PG		
5 - 20	1/4" - 3/4"	7 - 21	1	14 1020
27 - 64	1/2" - 2 1/2"	11 - 48	1	14 1022



Screw dies

to the clip housing

for metric screwed cable glands

	Blade quantity	L x W x H mm		
M 12 x 1.5	4	47 x 47 x 14	1	14 0889
M 16 x 1.5	4	47 x 47 x 14	1	14 0890
M 20 x 1.5	4	47 x 47 x 14	1	14 0891
M 25 x 1.5	6	47 x 47 x 14	1	14 0892
M 32 x 1.5	6	71 x 71 x 19	1	14 0893
M 40 x 1.5	6	71 x 71 x 19	1	14 0894
M 50 x 1.5	8	100 x 100 x 20	1	14 0895
M 63 x 1.5	8	100 x 100 x 20	1	14 0896

for tube PG (steel conduit thread) according to DIN 40430 PG

PG 7	4	47 x 47 x 14	1	14 0910
PG 9	4	47 x 47 x 14	1	14 0912
PG 11	4	47 x 47 x 14	1	14 0914
PG 13.5	4	47 x 47 x 14	1	14 0916
PG 16	4	47 x 47 x 14	1	14 0918
PG 21	6	47 x 47 x 14	1	14 0920
PG 29	7	71 x 71 x 19	1	14 0922
PG 36	8	71 x 71 x 19	1	14 0924
PG 42	8	100 x 100 x 20	1	14 0926
PG 48	10	100 x 100 x 20	1	14 0928



Guides

to the clip housing

for metric screwed cable glands

M 12	1	14 0869
M 16	1	14 0870
M 20	1	14 0871
M 25	1	14 0872
M 32	1	14 0873
M 40	1	14 0874
M 50	1	14 0875
M 63	1	14 0876

for tube PG

PG 7	1	14 0930
PG 9	1	14 0932
PG 11	1	14 0934
PG 13.5	1	14 0936
PG 16	1	14 0938
PG 29	1	14 0940
PG 42	1	14 0942



Clip housing for steel conduit thread

manufactured from malleable cast iron, with steel tube arms, without accessories

M 12 - 25 / PG 7 - 21	1	14 0900
M 32 - 40 / PG 29 - 36	1	14 0902
M 50 - 63	1	14 0884
PG 42 - 48	1	14 0904



Complete clips for steel conduit thread

with screw dies and guidance

M 16 - 25	1	14 0886
M 32 - 40	1	14 0887
M 50 - 63	1	14 0888
PG 9 - 21	1	14 0950
PG 29 - 36	1	14 0952

with adjustable guide (guide rings not required)

M 12 - M 25	1	14 0966
M 32 - M 40	1	14 0968
PG 7 - 21	1	14 0960
PG 29 - 36	1	14 0964



Step thread tap for metric screwed cable glands

Step thread tap manufactured from the most suitable oil-hardened tool steel for the most common metric screwed cable glands. Suitable for working with plastic and metal as well as stainless steel, between 5 and 6 threads per step, drive via hexagonal shaft (e.g. via ring, open-end or socket wrench). Approximately 85% of all screwed cable glands are covered with the M 12 - M 32 drill (CIMCO article no. 20 1240), approximately 90% of all screwed cable glands are covered with both of the other drills.

Compared to many single thread taps, the step thread taps offer a cost saving of up to 25%.

For screwed cable glands	Length	Hexagonal wrench size		
M 12 - 16 - 20 - 25 - 32	80	13	1	20 1240
M 12 - 16 - 20	55	10	1	20 1242
M 25 - 32 - 40	55	13	1	20 1244

Step drill and thread tap set for screwed cable glands

Compact set for the drilling of centric core holes and through-holes, as well as for the thread cutting of metric screwed cable glands according to DIN EN 60 423, supplied in a handy plastic carrying case. Set consisting of 1 HSS step drill for burr-free drilling and reaming, double-edged, with solid centring point and 13 laser-marked drilling steps for through-holes and core holes for screw glands measuring between M 12 and M 32, 12 mm ø holder shaft with 3 driver carriers to protect against the drill bit from slipping in the chuck, 5 HSS cutting thread taps (direct taps) sorted by ISO fine thread M 12 x 1.5 - M 16 x 1.5 - M 20 x 1.5 - M 25 x 1.5 - M 32 x 1.5, 45 mm long design, with hexagonal drive shaft (10 / 13 mm) for single-handed work even on areas difficult to reach, actuation via nut driver (groove and ratchet), but also via spanner and ring wrenches.

6 pieces	1	20 1250
----------	---	---------

Nozzle reamer bit

12 nozzle reamers, tapered, and holders, supplied in plastic box

0.60; 0.65; 0.70; 0.75; 0.80; 0.90; 1.0; 1.10; 1.30; 1.50; 1.70; 1.90 mm ø	10	20 4815
--	----	---------

Diamond cutting discs

- according to EN 13236
- Dry and wet cutting
- Suitable for all standard angle grinders and wall chasers (holder ø 22.2 mm)
- With key holes for cooling
- High-performance diamond segments made of diamond grit bond

Line Blue diamond cutting discs

with sinter-fused diamond segments, steel blade hardness: 28 HRC
suitable for: concrete products (soft), paving stone, composite stone, masonry brick

Height mm	Segment length mm	Quantity	ø mm		
7	38	8	115	1	20 8700
7	37	9	125	1	20 8702
7	34	14	180	1	20 8704
7	39	16	230	1	20 8706

Line Beige diamond cutting discs

with laser-fused diamond segments, steel blade hardness: 38 HRC, suitable for: concrete products (soft/medium), kerbstone, paving stone, composite stone, masonry brick, roof tiles (soft), hollow concrete block, tiles (hard), sand-lime brick (hard), sandstone (hard), clinker brick (medium-hard), cast iron pipe ductile)

Height mm	Segment length mm	Quantity	ø mm		
10	31.5	9	115	1	20 8708
10	31.5	10	125	1	20 8710
10	31.5	12	150	1	20 8712
10	33	14	180	1	20 8714
10	38	16	230	1	20 8716

Line Silver diamond cutting discs

with sinter-fused diamond segments, steel blade hardness: 28 HRC
suitable for: concrete products (soft), plaster, roof tiles (soft), hollow concrete block, masonry brick, clay brick (soft), sand-lime brick (soft abrasive), fire clay (soft), plaster, breezeblock, eternite and screed

Height mm	Segment length mm	Quantity	ø mm		
8	53	6	115	1	20 8718
8	58	6	125	1	20 8720
8	58	7	135	1	20 8722
8	58	7	135	1	20 8724*
8	53	8	150	1	20 8726
8	64	8	180	1	20 8728
8	76	10	230	1	20 8732

*Holder: ø 30 mm



Line White diamond cutting discs

with laser-fused diamond segments, steel blade hardness: 38 HRC

suitable for: concrete products (soft/medium-hard), kerbstone, paving stone, composite stone, roof tiles (medium-hard/soft), hollow concrete block, masonry brick, tiles (soft/hard), sand-lime brick (hard) and clinker brick (medium hard)

Height mm	Segment length mm	Quantity	ø mm		
7	31.5	9	115	1	20 8734
7	31.5	10	125	1	20 8736
7	33	14	180	1	20 8738
7	38.5	16	230	1	20 8740



Line Green diamond cutting discs

with laser-fused diamond segments, steel blade hardness: 38 HRC, suitable for: concrete products (medium-hard/hard),

reinforced concrete, exposed aggregate concrete, kerbstone, paving stone, composite stone, roof tiles (medium-hard), hollow concrete block, masonry brick, tiles (hard), sand-lime brick (hard/high-density), Quadro block, sandstone (hard), clinker brick (hard/medium-hard), cast iron pipe (ductile), fireclay (soft), basalt and natural stone

Height mm	Segment length mm	Quantity	ø mm		
10	31.5	9	115	1	20 8742
10	31.5	10	125	1	20 8744
10	31.5	12	150	1	20 8746
10	33	14	180	1	20 8748
10	40	16	230	1	20 8750



Line Red diamond cutting discs

with laser-fused diamond segments, steel blade hardness: 38 HRC, suitable for: concrete products (medium-hard/hard),

reinforced concrete, exposed aggregate concrete, kerbstone, paving stone, composite stone, roof tiles (medium-hard/soft), masonry brick, sand-lime brick (soft abrasive/hard), Quadro block, clinker brick (medium-hard)

Height mm	Segment length mm	Quantity	ø mm		
10	31.5	9	115	1	20 8752
10	31.5	10	125	1	20 8754
10	31.5	11	140	1	20 8756
10	33	12	150	1	20 8758
10	33	14	180	1	20 8760
10	38.5	16	230	1	20 8762



Line Black diamond cutting discs

with laser-fused diamond segments, steel blade hardness: 38 HRC

suitable for: sand-lime brick (soft/abrasive), sandstone (abrasive), plaster, aerated concrete and screed

Height mm	Segment length mm	Quantity	ø mm		
7	31.5	9	115	1	20 7980
7	31.5	10	125	1	20 7982
7	31.5	12	150	1	20 7984
7	33	14	180	1	20 7986
7	38.5	16	230	1	20 7988



Wall chaser 150

A parallel grip position, a short and compact design, as well as the ability to mill close to the edge are essential features that facilitate work with this wall chaser. Features: suction hose lock, milling depth adjustment (without tools), spindle lock for easy disc replacement, short distance to the guard, the ability to work close to the edge (up to 15 mm), slot widths can be changed in 1 mm increments, enclosed hood, easy removal of debris, sliding cut, electronic soft start, temperature and overload shut-down function, 35 mm ø connecting piece for direct connection to industrial vacuum cleaners

Specifications:

- Power consumption: 2,300 W
- Nominal speed: 4300 rpm
- Disc diameter: 150 mm
- Slot depth: 45 mm
- Weight: 5.8 kg
- Nominal voltage: 230 V ~
- Idling speed: 7500 rpm
- Disc holder: 22.2 mm
- Max. slot width: 46 mm

1 11 0012



Wall chaser 180

Enables work to be conducted quickly in even the hardest of materials. It is the ideal tool for installers to run larger cable ducts and conduits underneath plaster. Features: suction hose lock, milling depth adjustment (without tools), spindle lock for easy disc replacement, slim design, short distance to the guard, the ability to work close to the edge (up to 15 mm), slot widths can be changed in 1 mm increments, enclosed hood, easy removal of debris, sliding cut, electronic soft start, temperature and overload shutdown function, 35 mm ø connecting piece for direct connection to industrial vacuum cleaners

Specifications:

- Power consumption: 2,300 W
- Nominal voltage: 230 V ~
- Nominal speed: 2300 rpm
- Idling speed: 3100 rpm
- Disc diameter: 180 mm
- Disc holder: 22.2 mm
- Slot depth: 60 mm
- Max. slot width: 46 mm
- Weight: 7.5 kg

1 11 0014



Vacuum device 25

Despite its small container, the vacuum device is able to absorb large amounts of water and dust. The vibrating mechanism cleans the filters before a dust cloud develops, thereby enabling you to work without a filter bag. With electromagnetic filter vibration, enhanced service life of the filter cartridges, additional manual vibration possible, device socket with automatic start and switch-on delay for connected power tools, two polyester filter cartridges – durable and washable, filter surface 8600 cm² - high constant suction, with practical storage, self-supporting, wheels with parking brake, water detection with sensor switch-off function – automatic shut down when max. water level is detected, filter protection, electronically controlled soft start, electronically controlled overrun, visual display of the suction power

Specifications:

- Power consumption: 1,400 W
- Nominal voltage: 230 V ~
- Frequency: 50 - 60 Hz
- Max. airflow: 61 l/s
- Max. negative pressure: 248 mbar
- Container volume: 25 l
- Dust volume (net): 20 l
- Dimensions (L x W x H): 420 x 410 x 580 mm
- Weight: 12.7 kg

1 11 0016



Corundum cutting discs, steel

- according to EN 12413
- Suitable for all standard angle grinders (holder ø 22.2 mm)
- Dry cut

Corundum cutting discs, steel

Universal cutting disk

suitable for: steel, pipes, structural steel, mild steel, solid materials, metal sheeting etc.




Thickness mm	Design	ø mm		
2.5	offset 	115	1	20 8900
2.5	offset 	125	1	20 8902
2.5	straight 	230	1	20 8904

Corundum cutting discs, Inox

Inox cutting disk

High cutting speed, clean cut surfaces, virtually no burrs, little cutting waste



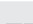
suitable for: sheet steel (including car body pressing), profiles, pipes and stainless steel

Thickness mm	Design	ø mm		
1.2	offset 	115	1	20 8910
1.2	offset 	125	1	20 8912
2.0	straight 	230	1	20 8914

Corundum cutting discs, stone

Universal cutting disk

suitable for: natural and synthetic stone, concrete, exposed aggregate concrete, tiles, etc.

Thickness mm	Design	ø mm		
2.5	offset 	115	1	20 8920
2.5	offset 	125	1	20 8922
3.0	straight 	230	1	20 8924

Zircon corundum serrated washer

for dry grinding, especially for surface machining, hard and tough abrasive grain allows extremely good removal of material

suitable for: steel (stainless), tempered steel, tough nonferrous metal and cast steel

Thickness mm	Design	ø mm		
60 grain	offset 	125	1	20 8930



Cased drill

safety cased drill bit manufactured from CR-V steel for wood, lightweight boards, plasterboards, not suitable for concrete and stone.

ø mm

6	400	1	20 6306
	600	1	20 6346
8	400	1	20 6308
	600	1	20 6348
10	400	1	20 6310
	600	1	20 6350
12	400	1	20 6312
	600	1	20 6352
14	400	1	20 6314
	600	1	20 6354
16	400	1	20 6316
	600	1	20 6356
18	400	1	20 6318
	600	1	20 6358
20	400	1	20 6320
	600	1	20 6360
22	400	1	20 6322
	600	1	20 6362
24	400	1	20 6324
	600	1	20 6364
25	400	1	20 6325
	600	1	20 6365
26	400	1	20 6326
	600	1	20 6366
28	400	1	20 6328
	600	1	20 6368
30	400	1	20 6330
	600	1	20 6370



Hole saws manufactured from HSS bi-metal with Vario tothing

The variable tooth distribution (4 - 6 teeth per inch) ensures vibration-free drilling. Hole saws with holder thread, from 32 mm ø additional driver holes. For rational drilling of steel, cast iron, stainless steel, copper, non-ferrous metals, hard and soft wood, sheetrock boards and other materials. Saw length 50 mm, max. drilling depth 40 mm, M 16 holder thread.

For holder shafts (CIMCO article no. 20 7580 and 20 7588).

ø mm

14	1	20 7414
16	1	20 7416
17	1	20 7417
19	1	20 7419
20	1	20 7420
21	1	20 7421
22	1	20 7422
24	1	20 7424
25	1	20 7425
27	1	20 7427
29	1	20 7429
30	1	20 7430



Hole saws manufactured from HSS bi-metal with Vario tooting

The variable tooth distribution (4 - 6 teeth per inch) ensures vibration-free drilling. Hole saws with holder thread, from 32 mm ø additional driver holes. For rational drilling of steel, cast iron, stainless steel, copper, non-ferrous metals, hard and soft wood, sheetrock boards and other materials. Saw length 50 mm, max. drilling depth 40 mm, M 16 holder thread, for holder shafts (CIMCO article no. 20 7584, 20 7586 and 20 7589).

ø mm

32	1	20 7432
35	1	20 7435
37	1	20 7437
38	1	20 7438
40	1	20 7440
41	1	20 7441
43	1	20 7443
44	1	20 7444
45	1	20 7445
46	1	20 7446
48	1	20 7448
50	1	20 7450
51	1	20 7451
52	1	20 7452
54	1	20 7454
55	1	20 7455
57	1	20 7457
59	1	20 7459
60	1	20 7460
64	1	20 7464
65	1	20 7465
67	1	20 7467
68	1	20 7468
70	1	20 7470
73	1	20 7473
75	1	20 7475
76	1	20 7476
79	1	20 7479
83	1	20 7483
86	1	20 7486
89	1	20 7489
92	1	20 7492
95	1	20 7495
98	1	20 7498
100	1	20 7500
102	1	20 7502
105	1	20 7505
111	1	20 7511
114	1	20 7514
121	1	20 7521
127	1	20 7527
140	1	20 7540
146	1	20 7546
152	1	20 7552



Hole saws for switch boxes

complete with holder shaft (CIMCO article no. 20 7584), guide drill bit (CIMCO article no. 20 7590) and push-out spring (CIMCO article no. 20 7596)

68	1	20 7562
68	1	20 7563



Holder shafts

complete with guide drill bit, CIMCO article no. 20 7590 and male thread, suitable for all HSS bi-metal hole saws
9.5 mm hexagonal bar, without driver

for hole saws 14 - 30 mm \varnothing	1	20 7580
for hole saws 32 - 152 mm \varnothing	1	20 7581

11 mm hexagonal bar, with driver

for hole saws 32 - 152 mm \varnothing	1	20 7584
---	---	---------

11 mm hexagonal bar, with driver and and internal counternut

for hole saws 32 - 152 mm \varnothing	1	20 7586
---	---	---------

SDS holder, without driver

for hole saws 14 - 30 mm \varnothing	1	20 7588
--	---	---------

SDS holder, with driver

for hole saws 32 - 152 mm \varnothing	1	20 7589
---	---	---------

HSS guide drill

for holder shafts (CIMCO article no. 20 7580, 20 7581, 20 7584, 20 7586, 20 7588 and 20 7589)

6.35 mm \varnothing - 70 mm in length	1	20 7590
6.35 mm \varnothing - 115 mm in length	1	20 7592

Push-out spring

suitable from 52 mm \varnothing

1	20 7596
---	---------

Edge countersink

for HSS bi-metal hole saws with 68 mm \varnothing , with two specially-hardened cutting teeth

1	20 7598
---	---------

HSS bi-metal - hole saw sets

ELEKTRO-TOP with edge countersink

Contents: One hole saw each in sizes 35 mm, 68 mm, 75 mm \varnothing

Edge countersink for 68 mm \varnothing , with two specially-hardened cutting teeth

Holder shaft with two driver pins No. 20 7584

HSS guide drill bit, 6.35 mm \varnothing , length 70 mm

Push-out spring (for all saws from 52 mm \varnothing)

Comprehensive drilling instructions, supplied in impact-resistant plastic box

1	20 7400
---	---------

ELEKTRO METRIC

with 6 hole saws for drilling through-holes for metric screwed cable glands

Holder shafts with HSS guide drill, (CIMCO article no. 20 7580 and 20 7584)

Hole saws \varnothing mm

20	20 7420
25	20 7425
32	20 7432
40	20 7440
50	20 7450
64	20 7464
1	20 7573

Socket cutter

Hole saw with metal body, 6 mm \varnothing holder shaft, induction-hardened saw tips, cutting depth 19 mm

7 saw attachments 25 (1") - 32 (1 1/4") - 38 (1 1/2") - 44 (1 3/4") - 51 (2") - 57 (2 1/4") - 63 (2 1/2") mm \varnothing

for wood and sheetrock	1	12 0882
------------------------	---	---------



Hard metal hole saws

For the rational drilling of:

sheetrock boards, Ytong stone, aerated concrete, wood, chipboard, plywood, hard cardboard, PVC, plastic coated boards, glass fibre boards

Saw length: 66 mm, max. drilling depth: 58 mm, M 16 holder thread, for hole saws

ø mm

35	1	20 7714
68	1	20 7728
71	1	20 7730
74	1	20 7732

Hard metal edge countersink

with 2 teeth

for hard metal hole saws 68 mm ø

1	20 7750
---	---------

Holder shafts

without guide drill bit, with M 16 receiver thread

cylindrical Holder 13 mm ø, 3 driver carriers	70	1	20 7760
SDS holder system	70	1	20 7764

Guide drill

hard metal-equipped

8 mm ø	100	1	20 7770
--------	-----	---	---------

Hard metal hole saw

68 mm ø, with edge countersink, holder shaft and HM guide drill bit

with holder shaft 13 mm ø (CIMCO article no. 20 7760)	1	20 7740
with SDS holder shaft (CIMCO article no. 20 7764)	1	20 7744

Hard metal hole saw set, 5 pieces

in steel sheet case, 3 hole saws, edge countersinks for 68 mm ø, 13 mm ø holder shaft,

1 each of HSS and hard metal guide drill bit

Hole saws ø mm

35, 68, 74	1	20 7700
------------	---	---------

Diamond core drill bit

laser-welded diamond studs, for dry cutting, no regrinding required, excellent drilling capacity and high durability.

Drilling without impact in general masonry, stone and concrete, Quadro stone, sand-lime brick.

M 16 holder thread, total length 80 mm, maximum drilling depth 70 mm.

Diamond stud quantity (segments)

6	ø 68	1	20 7380
10	ø 82	1	20 7382

Holder shaft

for diamond core drill bit, M 16 holder thread

Shaft SW 12 (hexagonal)	1	20 7384
SDS holder system	1	20 7385

Hard metal centring drill

for shaft (CIMCO article no. 20 7384)	9 mm ø x 120 mm	1	20 7386
---------------------------------------	-----------------	---	---------



1

2

3

4

5

6

7

8

9

10

11

12

13

14

15

16

17

18

19

20

21

22

23

24

25

26

Diamond core drill bit

complete with holder shaft and HM centring drill bit
with holder shaft (order number 20 7384)

Hexagonal size 12	ø 68	1	20 7378
	ø 82	1	20 7379

with holder shaft (order number 20 7385)

SDS holder system	ø 68	1	20 7388
	ø 82	1	20 7389



Diamond core bits

- Dry and wet cutting
- Suitable for all standard Diamant dry drills (holder M 16) speed recommendation approx. 2,000 rpm
- Designed with diagonal slotting for cooling (dust removal)
- High-performance diamond segments made of diamond grit bond

Diamond core bits 65, red

Working length: 65 mm

with laser-fused diamond segments made of diamond grit bond, suitable for: hollow concrete block, masonry brick, tiles (soft), sand-lime brick (soft abrasive/hard), plaster and aerated concrete

Height mm	Segment length mm	Quantity	ø mm		
8	24	3	68	1	20 8770
8	24	4	82	1	20 8772



Diamond core bits 65, silver

Working length: 65 mm

with laser-fused diamond segments made of diamond grit bond
suitable for: concrete products (soft), hollow concrete block, masonry brick, tiles (soft), sand-lime brick (soft abrasive/hard/high density), plaster and aerated concrete

Height mm	Segment length mm	Quantity	ø mm		
8	24	3	68	1	20 8774
8	24	4	82	1	20 8776



Diamond core bits 65, blue

Working length: 65 mm

with laser-fused diamond segments made of diamond grit bond, suitable for: concrete products (medium-hard), reinforced concrete, hollow concrete block, masonry brick, tiles (hard), sand-lime brick (soft abrasive/hard/high density), Quadro block, sand stone (hard), clinker stone (medium-hard), plaster and aerated concrete

Height mm	Segment length mm	Quantity	ø mm		
8	24	3	68	1	20 8778
8	24	4	82	1	20 8780



Diamond core bits 65, black

Working length: 65 mm

with laser-fused diamond segments made of diamond grit bond
suitable for: sand-lime brick (soft/abrasive), sandstone (abrasive), plaster and aerated concrete

Height mm	Segment length mm	Quantity	ø mm		
8	24	3	68	1	20 8782
8	24	4	82	1	20 8784



Holder shaft 65

for working length: 65 mm

Steel design, including ejector drift

Design

Hex	1	20 8836
SDS	1	20 8838

Centring drill (tapered) 65

for working length: 65 mm and for extensions with a conical holder shaft

Design

Total length 120 mm	1	20 8834
---------------------	---	---------



Diamond core bits 90, red

Working length: 90 mm

with laser-fused diamond segments made of diamond grit bond, suitable for: hollow concrete block, masonry brick, tiles (soft), sand-lime brick (soft abrasive/hard), plaster and aerated concrete

Height mm	Segment length mm	Quantity	ø mm		
8	24	3	68	1	20 8790
8	24	4	82	1	20 8792

Diamond core bits 90, silver

Working length: 90 mm

with laser-fused diamond segments made of diamond grit bond suitable for: concrete products (soft), hollow concrete block, masonry brick, tiles (soft), sand-lime brick (soft abrasive/hard/high density), plaster and aerated concrete

Height mm	Segment length mm	Quantity	ø mm		
8	24	3	68	1	20 8794
8	24	4	82	1	20 8796

Diamond core bits 90, black

Working length: 90 mm

with laser-fused diamond segments made of diamond grit bond suitable for: sand-lime brick (soft/abrasive), sandstone (abrasive), plaster and aerated concrete

Height mm	Segment length mm	Quantity	ø mm		
8	24	3	68	1	20 8798
8	24	4	82	1	20 8800

Diamond core bits 90 ruby

Working length: 90 mm

with laser-fused diamond segments made of diamond grit bond suitable for: concrete products (medium-hard), reinforced concrete, hollow concrete block, masonry brick, tiles (hard), sand-lime brick (soft abrasive/hard/high-density), Quadro block, sandstone (hard), plaster and aerated concrete

Height mm	Segment length mm	Quantity	ø mm		
8	24	3	68	1	20 8802
8	24	4	82	1	20 8804

Holder shaft 90

for working length: 90 mm

Steel design, including ejector drift

Design

Hex	1	20 8836
SDS	1	20 8838

Centring drill (tapered) 90

for working length: 90 mm and for extensions with a conical holder shaft

Design

Total length 140 mm	1	20 8844
---------------------	---	---------

Hard metal core bits 60 dry wall

Working length: 60 mm

with hard metal segments welded on, core bit holder M 16 suitable for: plywood, plastics (PVC), Fermacell, wood-core plywood, chipboard and GRP

Height mm	Segment length mm	Quantity	ø mm		
8	2.5	5	68	1	20 8786
8	2.5	5	82	1	20 8788

Holder shaft 60

for working length: 60 mm

including Allen key

Design

Hex	1	20 8850
SDS	1	20 8852



1

2

3

4

5

6

7

8

9

10

11

12

13

14

15

16

17

18

19

20

21

22

23

24

25

26

60 centring drill

for working length: 60 mm and for extensions with a cylindrical holder shaft and locking surface

Design

Total length 120 mm	1	20 8854
---------------------	---	---------

Diamond core bits 150 Universal

Working length: 150 mm

with laser-fused diamond segments made of diamond grit bond, suitable for: concrete products (medium-hard), exposed aggregate concrete, kerbstone, paving stone, composite stone, roof tiles (medium-hard), hollow concrete block, masonry brick, tiles (soft/hard) sand-lime brick (soft abrasive/hard/high-density), Quadro block sandstone (hard), clinker stone (medium-hard), plaster, aerated concrete and screed

Height mm	Segment length mm	Quantity	ø mm		
7	24	3	32	1	20 8810
7	24	3	42	1	20 8812
7	24	4	52	1	20 8814
7	24	4	72	1	20 8816
7	24	4	82	1	20 8818
7	24	5	112	1	20 8820
7	24	6	132	1	20 8822
7	24	7	152	1	20 8824
7	24	7	182	1	20 8826

Holder shaft 150

for working length: 150 mm, useable length: 200 mm

Steel design, including centring drill bit and ejector drift

Design

Hex	1	20 8830
SDS	1	20 8832

Centring drill (conical) 150

for working length: 150 mm

	1	20 8833
--	---	---------

Dust vac. - diam. core bits

for core bits (holder M 16), with head slot, suitable for tool types with a connecting thread M 18

	1	20 8846
--	---	---------

Centring point for dust removal	1	20 8848
---------------------------------	---	---------

Diamond dry drilling machine

Diamond dry drilling machine The ideal tool for recessing sockets up to 82 mm, for outlet sockets and junction boxes, dimensionally accurate and with little time required, also for hard materials such as sand-lime brick, masonry and clinker brick (dry). With mechanical safety clutch, electronic soft start, overload shutdown and temperature monitoring function, additional hand grip – can be variably adjusted on the clamping collar, locking knob with protection against unintentional setting.

Technical Data:

- power consumption: 1,300 W
- nominal voltage: 230 V ~
- nominal speed: 0 – 2000 rpm
- max. drilling diameter: 32 – 82 mm
- idling speed: 3400 rpm
- tool holder: M 18 outside
- clamping collar diameter: 46 mm
- weight: 3.4 kg

	1	11 0008
--	---	---------



Diamond dry drill, light impact

Dry drilling in diameters up to 90 mm in particularly hard material, e.g. high density sand-lime brick, armoured concrete and other abrasive materials.

With high operating speed, powerful motor, electronic soft start, temperature and overload shutdown function, gear mechanism with switchable light impact function, mechanical safety clutch, additional hand grip - variable adjustment via the clamping collar.

Specifications:

- Power consumption: 1,800 W
- Nominal voltage: 230 V ~
- Nominal speed: 0 – 2,050 rpm
- max. drilling diameter: 90 mm
- Idling speed: 3000 rpm
- Tool holder: M 18 external
- Clamping collar diameter: 53 mm
- Impact frequency: 41,000 impacts/min
- Weight: 5.9 kg

1 11 0010



Vacuum device 25

Despite its small container, the vacuum device is able to absorb large amounts of water and dust. The vibrating mechanism cleans the filters before a dust cloud develops, thereby enabling you to work without a filter bag. With electromagnetic filter vibration, enhanced service life of the filter cartridges, additional manual vibration possible, device socket with automatic start and switch-on delay for connected power tools, two polyester filter cartridges – durable and washable, filter surface 8600 cm² – high constant suction power, with practical storage, self-supporting, wheels with parking brake, water detection with sensor switch-off function – automatic shut down when max. water level is detected, filter protection, electronically controlled soft start and overrun, visual display of the suction power

Specifications:

- Power consumption: 1,400 W
- Nominal voltage: 230 V ~
- Frequency: 50 – 60 Hz
- Max. airflow: 61 l/s
- Max. negative pressure: 248 mbar
- Container volume: 25 l
- Dust volume (net): 20 l
- Dimensions (L x W x H): 420 x 410 x 580 mm
- Weight: 12.7 kg

1 11 0016



Holder shafts - dry drills

Steel design, with tool holder M 18, 5/8" or R 1/2"

including SDS centring drill bit	M 18 x 2.5 / M 16	1	20 8858
including cylindrical centring drill bit	5/8" / M 16	1	20 8860
including cylindrical centring drill bit	R 1/2" / M 16	1	20 8862
including centring drill bit (hook function)	M 18 x 2.5 / M 16	1	20 8856



Universal deburrer

for all deburring work on drill holes as well as on straight, convex and concave edges (e.g. pipe inner and outer edges), aluminium handle, interchangeable, hardened blade

1 20 8500



Jigsaw blades manufactured from CrV steel

self-service packaged, for wood, plastic up to 60 mm

for AEG - Bosch - Metabo - tools	5	20 8506
for Black + Decker - Skil - Fein - tools	5	20 8507

Jigsaw blades manufactured from HSS bi-metal

self-service packaged, for soft steel, aluminium, non-ferrous metal, stainless steel metal up to 4 mm

for AEG - Bosch - Metabo - tools	5	20 8522
for Black + Decker - Skil - Fein - tools	5	20 8523



5-piece set of workshop files


with cross cut, cut 2 (medium fine), length 200 mm, with wooden haft, suitable for metal as well as wood and plastic

1pc.  1 20 6806



Workshop files

according to DIN 7261, without grip

Shape A, flat hand 

Cut	Size/mm	PU	Article no.
Cut 1	150	10	20 6502
	200	10	20 6503
	250	10	20 6504
	300	5	20 6505
Cut 2	150	10	20 6512
	200	10	20 6513
	250	10	20 6514
Cut 3	300	5	20 6515
	150	10	20 6522
	200	10	20 6523
	250	10	20 6524
	300	5	20 6525

Shape C, triangular 

Cut 1	150	10	20 6532
	200	10	20 6533
	250	5	20 6534
	300	5	20 6535
Cut 2	150	10	20 6542
	200	10	20 6543
	250	5	20 6544
Cut 3	300	5	20 6545
	150	10	20 6552
	200	10	20 6553
	250	5	20 6554
	300	5	20 6555


Shape D, square 

Cut 1	150	10	20 6561
	200	10	20 6562
	250	10	20 6563
	300	5	20 6564
Cut 2	150	10	20 6571
	200	10	20 6572
	250	10	20 6573
Cut 3	300	5	20 6574
	150	10	20 6581
	200	10	20 6582
	250	10	20 6583
	300	5	20 6584



Workshop files

according to DIN 7261, without grip

Shape E, semi-circular 

Cut 1	150	10	20 6592
	200	10	20 6593
	250	10	20 6594
	300	5	20 6595
Cut 2	150	10	20 6602
	200	10	20 6603
	250	10	20 6604
	300	5	20 6605
Cut 3	150	10	20 6612
	200	10	20 6613
	250	10	20 6614
	300	5	20 6615

Shape F, round 

Cut 1	150	10	20 6622
	200	10	20 6623
	250	10	20 6624
	300	5	20 6625
Cut 2	150	10	20 6632
	200	10	20 6633
	250	10	20 6634
	300	5	20 6635
Cut 3	150	10	20 6642
	200	10	20 6643
	250	10	20 6644
	300	5	20 6645

Rasps

without grip

Cut 1	250	1	20 6701
Cut 2	250	1	20 6711

File grips

according to DIN ISO 395, manufactured from beech wood

for files mm

up to 100	80	20	20 6850
up to 125	100	20	20 6852
up to 200	120	20	20 6854
up to 300	140	20	20 6856
up to 350	160	20	20 6857

Key file set, 6 files

with wooden haft, according to DIN 7283, shape A to F, length 100 mm

supplied in a plastic bag 	10	20 6750
---	----	---------

File brush

for the cleaning of wood and metal files. With stable beech wood carrier and steel edging.

Working surface 115 mm x 40 mm	250	12	14 1325
--------------------------------	-----	----	---------

Contact file set, 6-pieces

in DIY snatch bag

Length 160 mm	1 set	20 6760
---------------	-------	---------

Contact brush

contact brush or spark plug brush with 0.15 mm ø curved brass edging and stable beech wood handles.

Double-row	100	12	14 1320
------------	-----	----	---------



- 1
- 2
- 3
- 4
- 5
- 6
- 7
- 8
- 9
- 10
- 11
- 12
- 13
- 14
- 15
- 16
- 17
- 18
- 19
- 20
- 21
- 22
- 23
- 24
- 25
- 26